

**Images for Playing Card Memorization**  
by Lew Toulmin, 2017



**Hearts Ace (1): HaT on  
"Ace" Ventura**



**Hearts 2: HeN**



**Hearts 3: HaM**



**Hearts 4: HaiR**



**Hearts 5: Hail**



**Hearts 6: HaJi**



**Hearts 7: Hook**



**Hearts 10: Healthy ToeS**



**Hearts 8: Hoof**



**Hearts Jack: Jack of Hearts  
from song by bob dylan**



**Hearts 9: HuB**



**Hearts Queen:  
Queen Mother**



**Hearts King: King Arthur  
(Heartur)**



**Clubs 3: CaMo**



**Clubs Ace (1): Lee Archer,  
Tuskegee top Ace**



**Clubs 4: CaR**



**Clubs 5: KaLe**



**Clubs 2: CaN**



**Clubs 6: CaGe**



**Clubs 10: KaTo'S mask**



**Clubs 7: CaCa**



**Clubs 8: CoFFee**



**Clubs Jack: Sayf Al-Din, Rep. Guard Chief of Staff, killed, from the Iraq "deck of cards"**



**Clubs 9: CaB**



**Clubs Queen: Mary Queen of Scots (malevolent queen)**





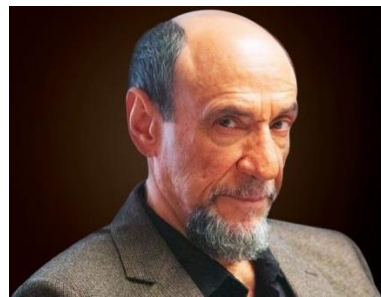
**Clubs King: Richard III  
(malevolent king)**



**Diamonds 3:  
Tree of Diamonds**



**Diamonds Ace (1):  
Amber Rose  
w/ Ace of Diamonds  
niteclub**



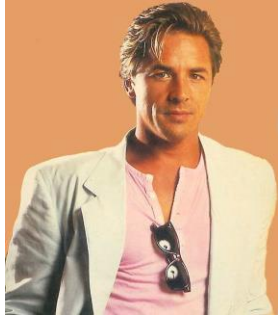
**Diamonds 4: DaR adal  
(from Homeland TV series)**



**Diamonds 2:  
DaN rather**



**Diamonds 5:  
DoLLy parton**



**Diamonds 6:  
Don Johnson**



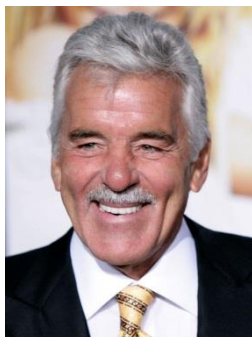
**Diamonds 9:  
DeBBie Reynolds**



**Diamonds 7:  
DiCK van Dyke**



**Diamonds 10:  
Donald Sutherland**



**Diamonds 8:  
Dennis Farina**



**Diamonds Jack:  
Neil Diamond**



**Diamonds Queen:  
Angela Lansbury in "The  
Manchurian Candidate"**



**Spade 2: black SaNta**



**Diamond King:  
Diamond Jim Brady**



**Spade 3:  
black uncle SaM**



**Spade Ace (1):  
Sidney reilly,  
#1 Ace of Spies**



**Spade 4: SiR Lancelot**



**Spade 5: black popeye the Sailor**



**Spade 8: Steve Forbes**



Fr. Powell after his ordination. Photo by Doris Yu.



**Spade 6: Society of Jesus priest**



**Spade 9: black Saab**



**Spade 7: Sam Kinison**



**Spade 10: SS officer**





**Spade Jack: Eddie Murphy**



**Spade Queen: Queen Latifah**



**Spade King: Martin Luther King (major black leader named King)**